



**MONTANA
FARM TO
SCHOOL**

Farm to Tray Tour

MT Farm to School Showcase | October 27, 2020



OFFICE *of*
COMMUNITY
FOOD SYSTEMS

THE
FARM *to* SCHOOL
GRANT PROGRAM

Thank you!

This event has been supported in part by the Food and Nutrition Service, U.S. Department of Agriculture and Montana Farm Bureau Foundation's Promotion and Education Committee. USDA is an equal opportunity provider, employer, and lender.

Presenters

Ginger Buchanan

MT Farm to School Coach | MT Team Nutrition
Nutrition Program Director | Huntley Project School District
Ginger.buchanan@montana.edu

Aubree Roth

MT Farm to School Coordinator | MT Team Nutrition
(406) 994-5996
aubree.roth@montana.edu

Sarah Penix

MT Farm to School VISTA | MT Team Nutrition
sarah.penix@montana.edu

Stacey + Tiffany Ogren

Ogren Ranch
feelinropey@gmail.com

Celeste + Jake Miller

Miller Ranch Beef
millerranchbeef@gmail.com

Barry Hansen + Lynn DuCharme

Native Fish Keepers, Inc.
www.nativefishkeepers.org

Shane Flowers

Project Meats
projectmeats406@gmail.com

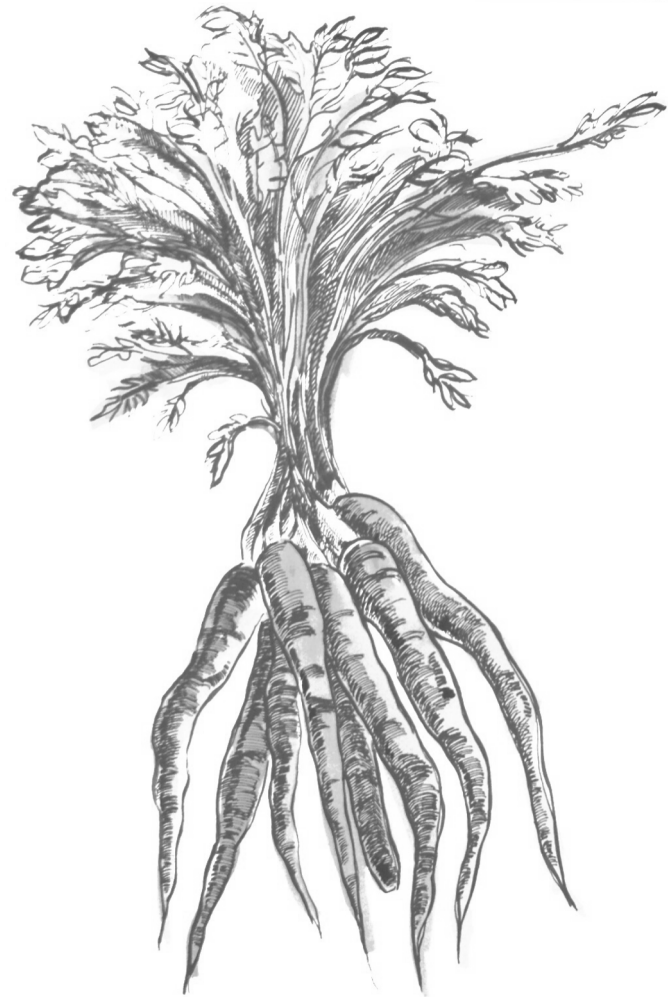
Pam Fruh

Montana Office of Public
Instruction
pamela.fruh@mt.gov



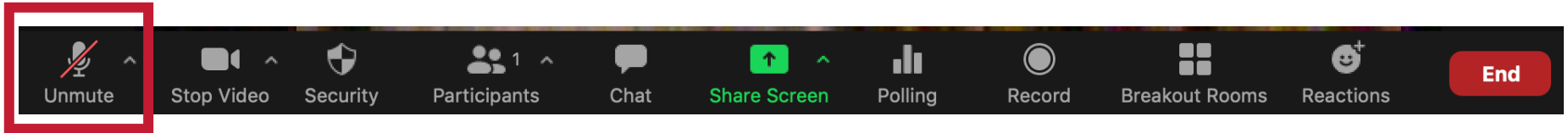
Overview

- 3:00 Welcome + Introductions
- 3:15 Farm to Tray Tours, Part 1
- 4:00 Break
- 4:10 Farm to Tray Tours, Part 2 + Resources
- 4:45 Questions, Discussion
- 5:00 End



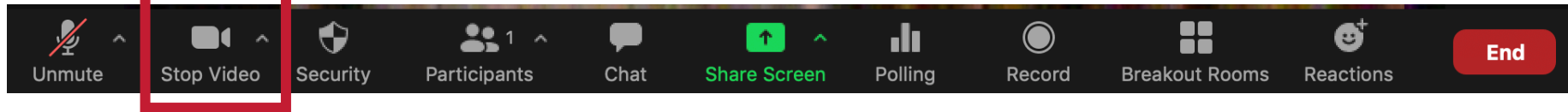
Zoom Instructions: Audio

Mute/Unmute + Audio Settings

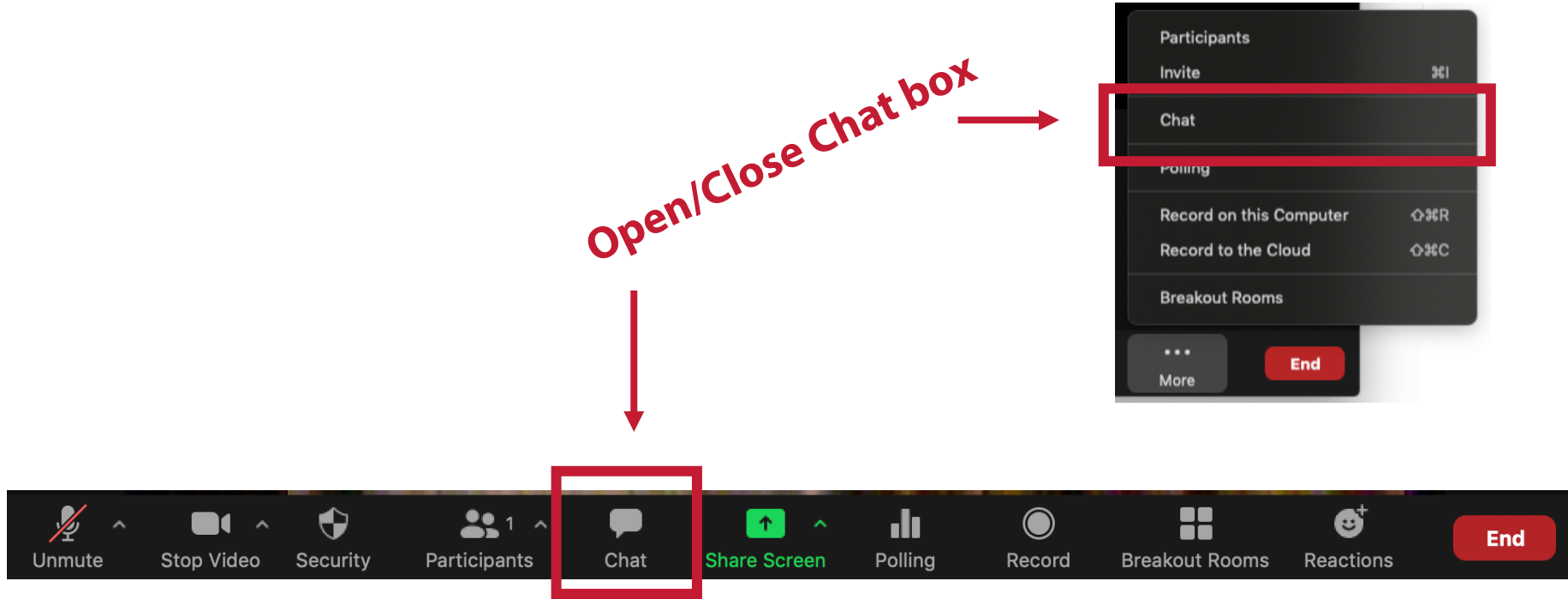


Zoom Instructions: Video

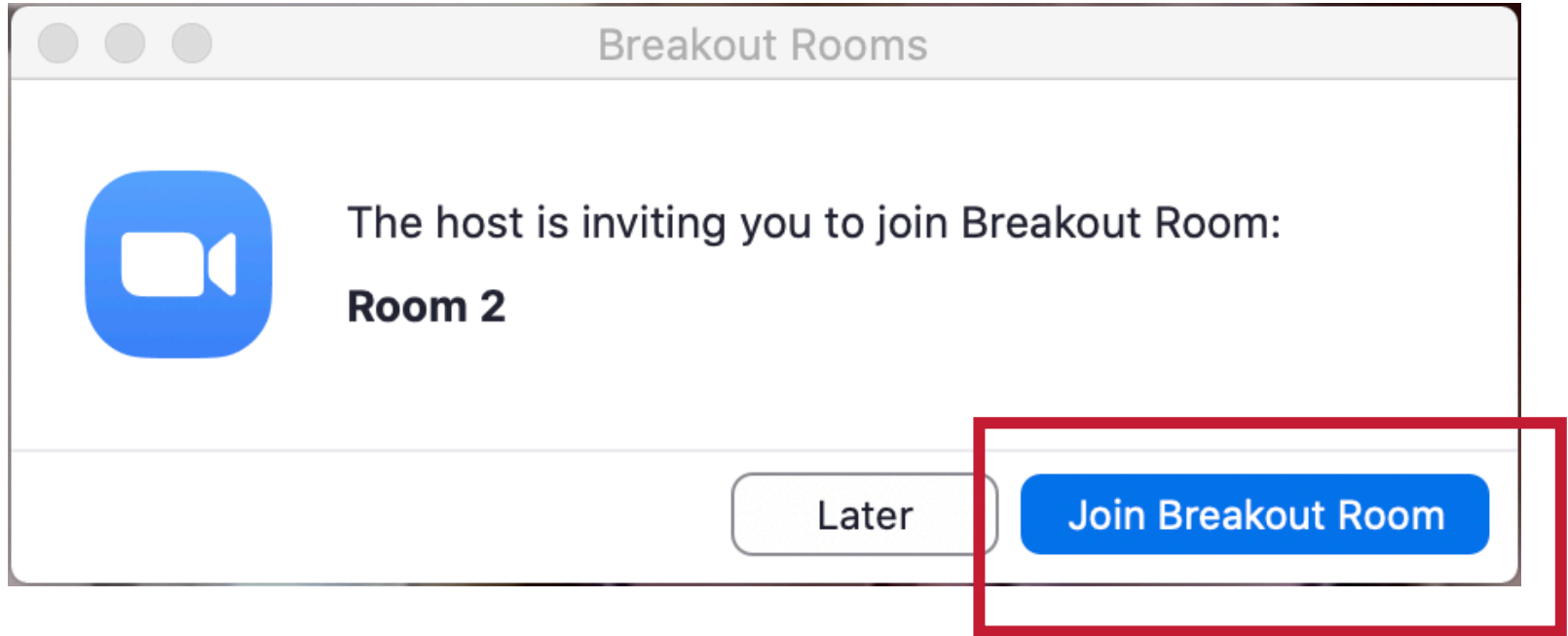
Turn on + off video



Zoom Instructions: Chat Box



Zoom Instructions: Breakout Rooms



CORE ELEMENTS OF **FARM** *to* **SCHOOL**



CORE ELEMENTS OF **FARM** *to* **SCHOOL**





BIG SKY



CORE ELEMENTS OF **FARM** *to* **SCHOOL**





MISSOULA



**GARDEN CITY
HARVEST**

GROW. FEED. INSPIRE.



HINSDALE



BOZEMAN

Photo Credit: Gallatin Valley Farm to School

CORE ELEMENTS OF **FARM** *to* **SCHOOL**



Parts of a Whole Grain Seed

(Also known as a kernel of corn, wheat, rice, oats, barley, rye, etc.)

Whole grains contain many healthy things, especially healthy things are found in the germ and bran, foods kernel can play an important role in having good _____ and _____
Which parts of the kernel are the fiber?



Theme: Whole Grains



Photo Credit: Gallatin Valley Farm to School

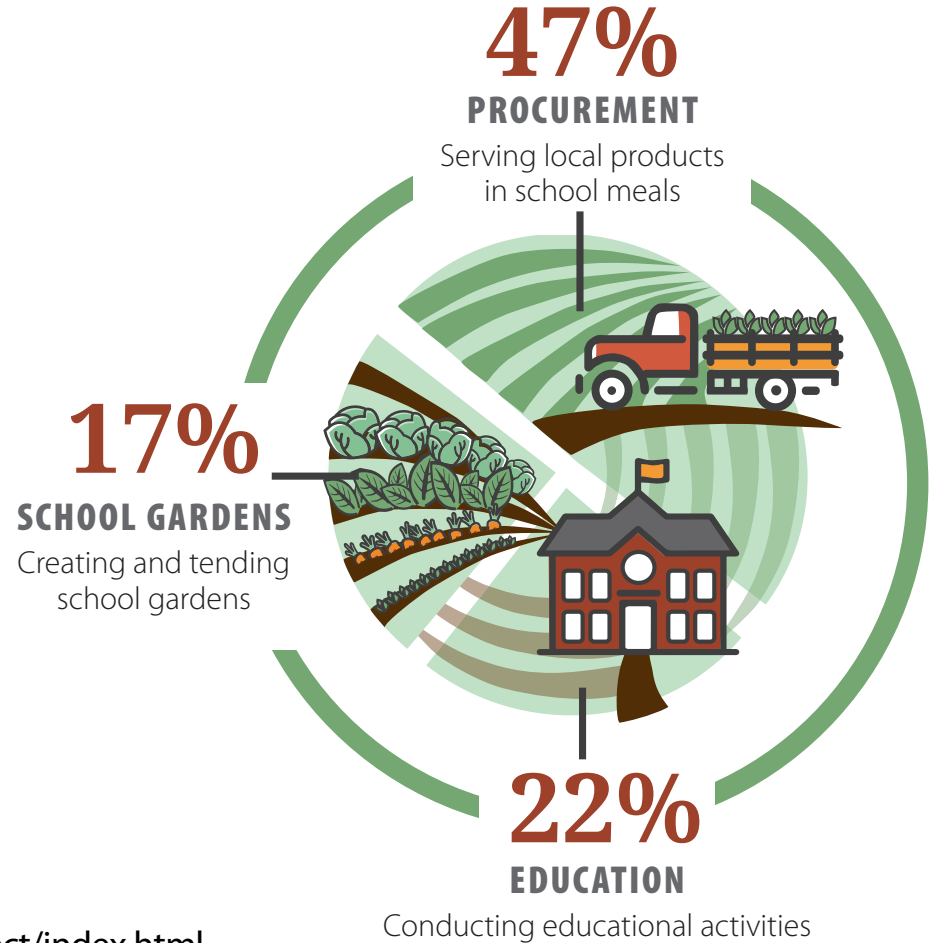
BOZEMAN



ENNIS

Photo Credit: GROWW Program Facebook

Farm to School is Growing in Montana



Farm to School Benefits

Public Health

Economy

Education

Environment

**Community
Engagement**

Montana Farm to School Leadership Team

Communication

Distribution

Grant Program

Farm to ECE

Beef to School

Education



Introductions

- Name
- Title/Affiliation
- Town
- Favorite local food
- What interests you the most about today's event?

Break

Take 10 minutes

Stay connected on Zoom, mute audio

DoD Fresh

Pam Fruh

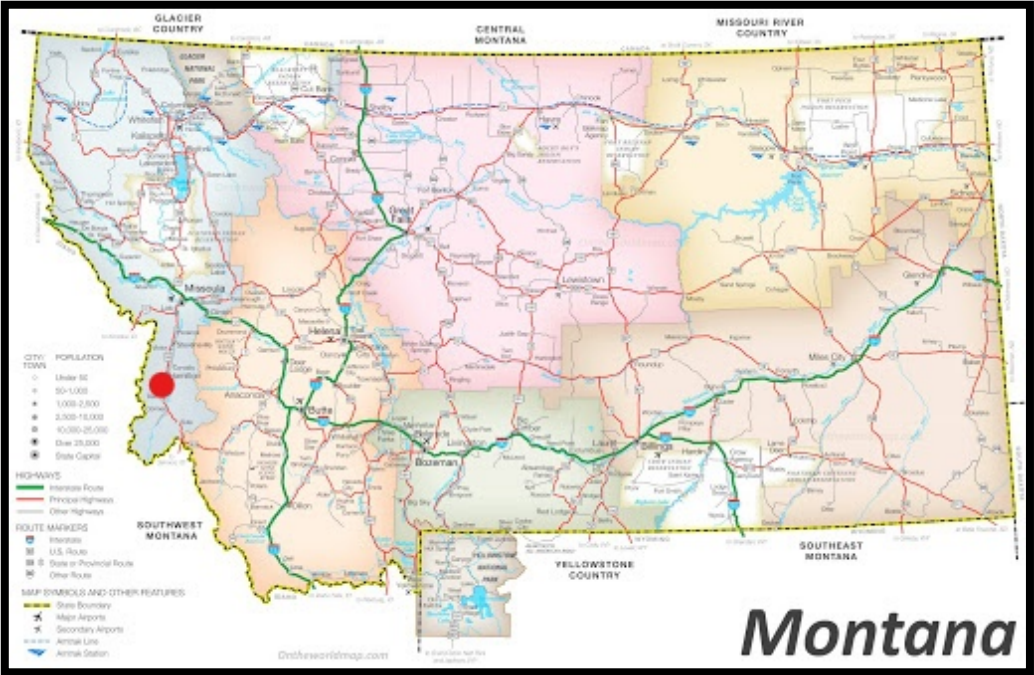
Montana Office of Public Instruction

USDA Foods & USDA DoD Fresh

- USDA Foods has a dual mission of supporting domestic agriculture and providing healthy foods to schools
- Schools receive USDA Foods as a benefit for participating in the National School Lunch Program
- Schools decide how to allocate their funding
- USDA DoD Fresh is one choice for how to utilize funds

Swanson's mountain view orchards

Corvallis, Montana



Picking up apple order October 26, 2020



Apples for USDA DoD Fresh

20 Pallets >>> 700 Cases >>> 28,000 Pounds



Challenges for local procurement with DoD Fresh

- Locating a supplier that can provide needed quantities
- Arranging product pick up
- Price structure
- The size of our state!

➤ Pam Fruh

MT Office of Public Instruction – School Nutrition Programs

Pamela.fruh@mt.gov

Resources + Opportunities

www.montana.edu/mtfarmtoschool

Montana Farm to School

Resources

Montana Harvest of the Month

Farm to School Leadership Team

Connect



Montana Farm to School / Montana Beef to School

Montana Beef to School

About the Montana Beef to School Project

The Montana Beef to School Project explores how to make beef to school programs successful and encourages the use of local beef in every Montana school.

What is the Montana Beef to School Project? The Montana Beef to School Project is a three-year collaborative project between several Montana beef producers and processors, schools and many stakeholders represented in the Montana Beef to School Coalition.



Moooooving Forward Together: Strategies for Montana Beef to School

Read the case study report below for tips and stories about how to bring local beef into schools

www.montana.edu/mtfarmtoschool/beeftoschool.html

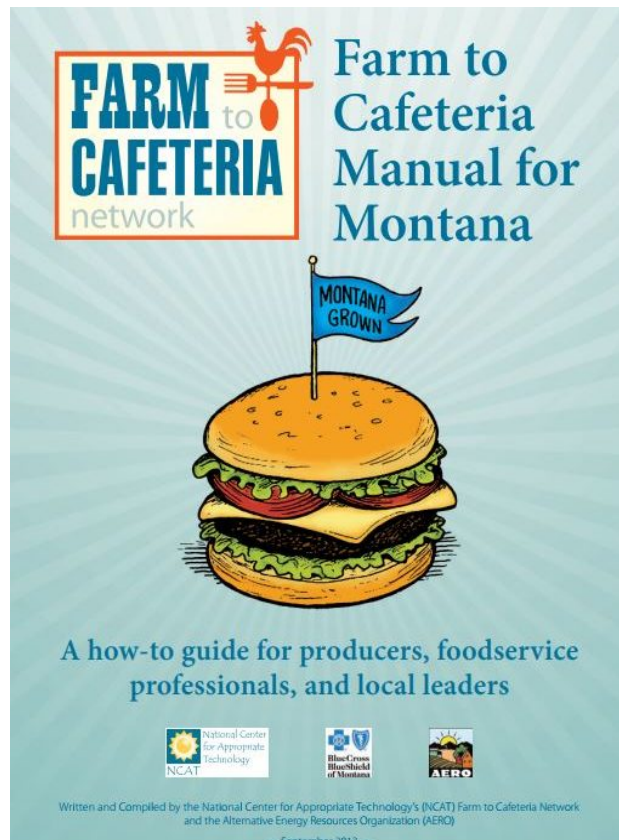


Montana Farm to School

Montana Team Nutrition Program
Montana State University
324 Reid Hall
PO Box 173370
Bozeman MT 59717-3370

Procurement Guides

- Montana Farm to Cafeteria Guide
 - www.montana.edu/mtfarmtoschool
- USDA Local Procurement Guide
 - <http://www.fns.usda.gov/farmtoschool/procuring-local-foods>
- Beef to School Procurement Templates
 - www.montana.edu/mtfarmtoschool



Finding Local Food

- **Farmers markets** <http://agr.mt.gov/agr/Programs/FarmersMarkets/>
- **Food and product directories**
 - Farm to Cafeteria Producer Database <http://farmtocafeteria.ncat.org/producer/>
 - Made in Montana Directory <http://www.madeinmontanausa.com/>
 - Abundant Montana Sustainable Foods Directory <http://www.aeromt.org/abundant/>
- **Meat processors**
 - State-Inspected Facilities Directory <http://liv.mt.gov/Meat-Milk-Inspection/Meat-and-Poultry-Inspection>
 - Federally-Inspected Facilities Directory <http://www.fsis.usda.gov/wps/portal/fsis/topics/inspection/mpi-directory>
- **Montana Lunchline listserv**
 - Food service managers only
- **Distributors and grower cooperatives**
- **DOD Fresh** – check the catalog for MT products



MONTANA

Harvest of the Month



MONTANA

Harvest of the Month

Playlist: <https://www.youtube.com/playlist?list=PLxD1eXc1FC3V6TYM43aTOg13edkky1vs>



MONTANA



Foodcorps.org

Upcoming Events

- **Montana Farm to School Showcases**
 - Spring 2021 – TBD
- **Montana Farm to School Summit + Institute** – *New date!*
 - August 11-12, 2021 – Helena
- **Montana Farm to School Webinars + Showcases** – *Archived*

<http://www.montana.edu/mtfarmtoschool/resources/training-event.html>



AUGUST 11-12, 2021 | HELENA, MT

WWW.MONTANA.EDU/MTFARMTOSCHOOL/SUMMIT.HTML

OCTOBER

is



NATIONAL **FARM TO SCHOOL** MONTH

Celebrate **Farm to School Month** throughout **Montana!**



Montana



Crunch Time

Join preschools, schools, colleges, and individuals across Montana in celebrating Food Day and National Farm to School Month by crunching into locally and regionally grown apples on

October 22nd

For more information about Montana Crunch Time, to register and receive your guide, visit:

**[montana.edu/
mtfarmtoschool](http://montana.edu/mtfarmtoschool)**

Share your “crunch byte” (video and photos) on social media with

#MTCrunchTime

Montana Crunch Time is sponsored by the Montana Farm to School Leadership Team and partners. Learn more about the Montana Farm to School Leadership Team and the member organizations at:

www.montana.edu/mtfarmtoschool/leadership-team/index.html

Upcoming Montana Team Nutrition Project



- Harvesting Montana Recipes Contest starts soon!
- Develop and evaluate recipes for school meal programs using ingredients from Montana including barley, beets, bison, chokecherries, sweet cherries, lentils and winter squash.
- Looking for six schools to test recipes and implement education.

USDA Farm to School Grant FY21



THE
FARM *to* **SCHOOL**
GRANT PROGRAM

- Deadline: January 8, 2021
- New Turnkey tracks
- Webinars: November 10 & 13
- <https://www.fns.usda.gov/cfs/farm-school-grant-program>

Share Your Story

- Share your challenges, successes, ideas.
 - aubree.roth@montana.edu
 - Share Your Story Form
- Social media: #MTHarvestoftheMonth #MTFarmtoSchool
- Montana Farm to School Facebook Page
- Use USDA Photo Releases for photos
- Local news media

 **Hinsdale Kitchen** added 5 new photos — with Margo Anderson Salveson.
January 12 at 3:27pm · 🌱

Harvest of the month!! Carrots!!!



Fallon County **TIMES**

Subscribe to our
moment of our loc

HOME NEWS COMMUNITY SCHOOLS SPORTS OPINION OBITUARIES CLASSIFIEDS

Harvest of the Month – Winter Squash

DECEMBER 23, 2016 IN SPORTS

f t g+ @ in



Jaiden Dulin and Jaeda Paul cleaning out the squash, which is the December harvest of the month, so Connie Lang and Bordin Rieger can incorporate them in the meals they prepare for the students.

Montana Farm to School Coaches



Ginger Buchanan
Ginger.Buchanan@montana.edu



Faith Oakland
Faith.Oakland@montana.edu

Questions?

Please type your questions into the chatbox, select all attendees or unmute.

Ready to Dig In?

Montana Harvest of the Month

www.montana.edu/mtharvestofthemoth

Montana Farm to School

www.montana.edu/mtfarmtoschool

Facebook

<https://www.facebook.com/montanafarmtoschool>

Instagram

<https://www.instagram.com/mtfarmtoschool/>

Contact

Aubree Roth

(406) 994-5996 | aubree.roth@montana.edu

